



duşlar su perdeleri ve jetler

showers water curtains and jets

2018
Fiyat Listesi-Price List

NOZBART®



TÜM

PLASTİK VE MAKİNA KALIP SANAYİ VE TİCARET LİMİTED ŞİRKETİ

**TÜV
CERT**
DIN EN ISO 9001:2008
Zertifikat 15 100 52993

TSE

PG

CE

UHE
ULUSAL HAVUZ VE YERLİ
SUYU KULLANIM ENJENYERLERİ
* UHE Kurucu Üyesidir.*



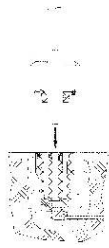
Ayak yıkamalı duş / *With feetwasher shower*

Duş ayağı opsiyonel olup fiyata dahil değildir. (Cod. 87100913)
Optional anchor, Cod. 87100913, not included.

Cod.	€	a	b	c	d	e	f	Kg	m ³
87170056	233,00	387	2287	1210	450	43ø	28ø	5	0,04



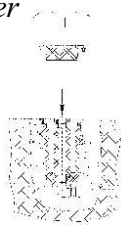
Duş ayağı
Anchor shower



Duş ayağı kolay montaj ve demontaj sağlar
Anchor which allows an easy assembling / dismantling.

Cod.	€	ø	Kg	m ³	U
87100913	35,00	43	0,98	0,0033	x1
87100939	52,00	63	0,98	0,0033	x1

Duş ayak kapağı
Cover anchor shower



Cod.	€	Kg	m ³	U
87100947	25,00	0,1	0,001	x1

Çift başlıklı duş / *Double shower*

Duş ayağı gerektirir ve fiyata dahil değildir. (Cod. 87100939)
Needs anchor; Cod. 87100939, not included.

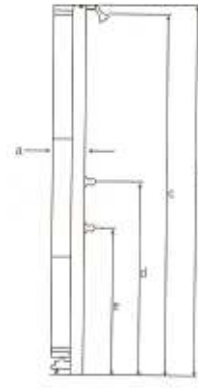


Cod.	€	a	b	c	d	e	f	Kg	m ³
87170072	658,00	782	2288	850	-	63ø	22ø	8	0,05

Otomatik kapamalı / *With close automatically*

Cod.	€	a	b	c	d	e	f	Kg	m ³
87170073	964,00	782	2288	850	1050	63ø	22ø	8	0,05

Güneş ısıtım duş (Helios) *Solar Helios*



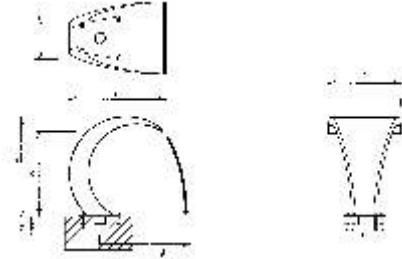
Cod.	€	a	b	c	d	e	Kg	m ³
87170091	813,00	195	2203	2120	1150	875	22	0,14

NEW



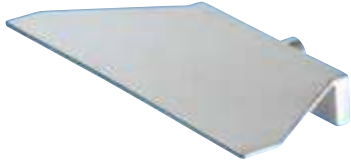
Mini Bali su perdesi / Water curtain Mini Bali

Debi / Flow : 20 m³/h
Ayak gerektirmez / Anchor not needed
Dişi bağlantı / Female connection : 1 1/2"

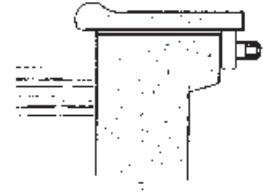
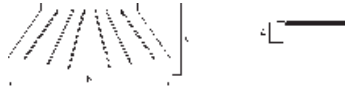


Cod.	€		a	b	c	d	e	f	g	h	Kg	m ³
87185041	816,00	AISI 314	467	480	395	62	1 1/2" G	350	1000	204	14	0,086

Mai su perdesi / Water curtain Maui

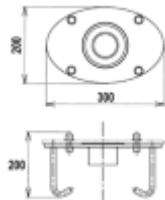


Debi / Flow : 20 - 10 - 35 m³/h
Dişi bağlantı / Female connection : 1"



AISI 316

Cod.	€		a	b	c	Kg	m ³
87186060	593,00		62	500	220	4	0,0036
87186061	459,00		62	300	220	3	0,0018
87186065	1012,00		62	1000	250		



Su jeti ayağı / Anchor for cannon jet Fidji **AISI 316**

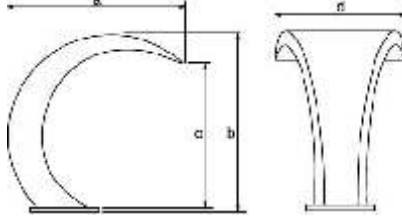
Dişi bağlantı / Female connection : 2"

Cod.	€		Kg	m ³
87185039	311,00		3,25	0,018

Bali su perdesi / Water curtain Bali

Debi / Flow : 30 m³/h
Ayak gerektirir / Needs anchor

AISI 316



87185047

Parlak

Brillo
Polished
Polie

Cod.

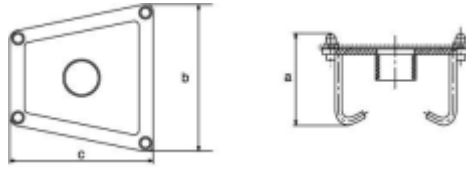
€

a b c d e f Kg m³

87185047	1521,10	Parlak	673	688	567	500	245	124	24,8	0,28
87185054	1461,10	Mat	673	688	567	500	245	124	24,8	0,28

Su perdesi ayağı / Anchor for water curtain Bali

Dişi bağlantı / Female connection : 2"



87185054

Mat

Mate
Brush polished
Mat

AISI 316

Cod.

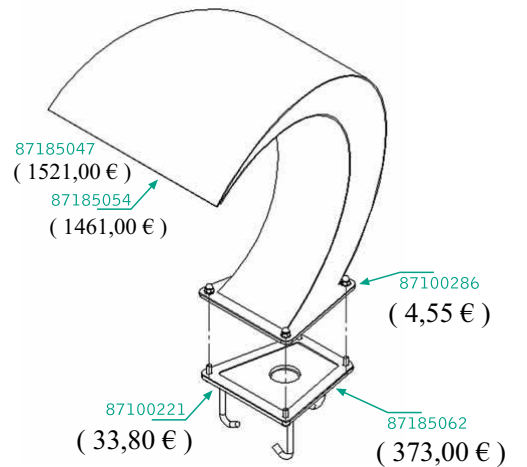
€

a b c d Kg m³

87185062	373,00		200	300	300	45	4,25		0,018
----------	--------	--	-----	-----	-----	----	------	--	-------

Bali su perdesi / Water curtain Bali

- 87185047 Su perdesi parlak / Water curtain Polished (1521,00 €)
- 87185054 Su perdesi mat / Water curtain brush polished (1461,00 €)
- 87185062 Su perdesi ayağı / Anchor for water curtain (373,00 €)
- 87100286 DIN 571 M8x50 Civata / DIN 571 M8x50 (4,55 €)
- 87100221 Bağlantı / Joint (33,80 €)



87185047
(1521,00 €)

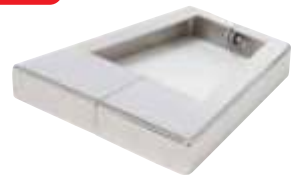
87185054
(1461,00 €)

87100286
(4,55 €)

87100221
(33,80 €)

87185062
(373,00 €)

NEW



Su perdesi muhafazası / Escutcheon Bali curtain

AISI 316

Cod.

€

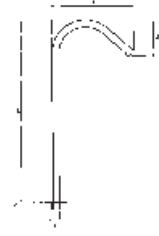
Descr. Kg m³

87185048	223,00	Parlak	Brillo	2	0,0006
87185055	213,00	Mat	Mate	2	0,0006



Tahiti su jeti / Cannon jet Tahiti

Debi / Caudal / Flow / Débit: 6 m³/h
Ayak gerektirmez / No necesita anclaje / No needs anchors / N'a pas besoin de l'ancrage.
Erkek bağlantı / Rosca macho / Male connection / Embranchement mâle: 1 1/2"
ø43 mm



AISI 316

Cod.	€	a	b	c	d	e	Kg	m ³
87187010	187,00	482	1100	40	217	1 1/2"	4,6	0,06



Nozzle A

AISI 316

Cod.	€	Kg	m ³
87187014	110,00	0,42	0,003



Nozzle B

AISI 316

Cod.	€	Kg	m ³
87187012	92,00	0,39	0,003



Nozzle C

AISI 316

Cod.	€	Kg	m ³
87187011	131,00	0,5	0,003



Nozzle D

AISI 316

Cod.	€	Kg	m ³
87187013	137,00	0,58	0,003